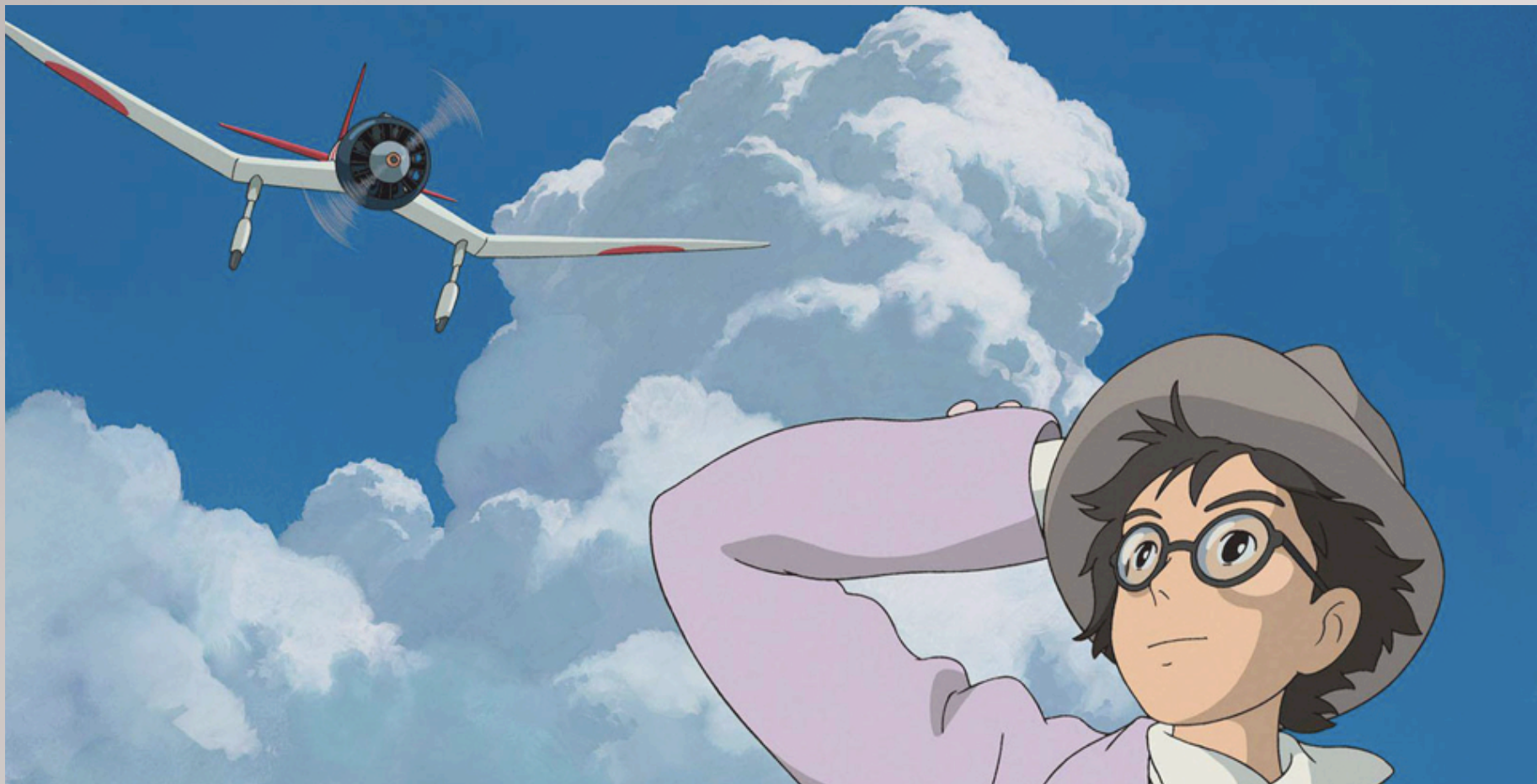


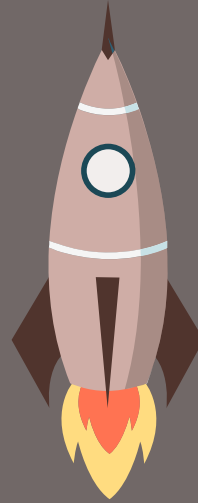
# Life After JET



# Setting Goals



Career Goals



Education  
Goals



# Career Goals

Is there a market for your skills and experience back home?

## Certifications

Ask your JTEs or supervisors for a simple recommendation letter.

## Research the market

TOEFL, TESL, BJT, JLPT, CELTA

## Recommendation Letters



# Career Fairs



## AFTER JET CONFERENCE

CLAIR

Osaka

January 28

Free Admission

Accommodation and transportation are  
paid by JET Participants (*not* the BOE)

Mock interviews, Job hunting seminar

Deadline: Jan. 20

## AFTER JET CONFERENCE

CLAIR

Yokohama

February 20-21

Free Admission

Accommodation and transportation are  
paid by JET Participants (*not* the BOE)

Career consultation, Market your skills, Graduate  
studies, Alternative careers

Deadline: Jan. 20

## GO GLOBAL CAREER FAIR

DAIJOB

Tokyo

February 17

Free Admission

Accommodation and transportation are  
paid by JET Participants (*not* the BOE)

Not a workshop

No Deadline





# Career Resources

1

## **CAREERFORUM.NET**

- Professional jobs

2

## **DAIJOB.NET**

- Professional jobs

3

## **JOBS.GAIJINPOT.COM**

- Professional jobs  
- ALT jobs

4

## **HEART-SCHOOL.JP/EN**

- ALT jobs

5

## **GLOBAL LEARNING ADVANCEMENT DEPARTMENT**

[npo-glad.org/Information/index-en](http://npo-glad.org/Information/index-en)  
- ALT jobs

6

## **FACEBOOK GROUP (AJET JOB LISTINGS)**



# Educational Goals

- Research the current state of your field.
- Will you need to take the GRE?

## Research Admission Deadlines

- Ask your JTEs or supervisors for a simple recommendation letter.
- Contact old professors.

## Research Grad schools

- Deadline varies from different departments in each school.

## Recommendation Letters





# Preparing to Leave

# Preparing Mentally and Emotionally



- 1 Enjoy goodbye enkais
- 2 Say goodbye to your favorite onsens!
- 3 Visit other prefectures
- 4 Take all the pictures!!!
- 5 AJET farewell party @ Outlands

JUNE						
M	T	W	T	F	S	S
30	31	1	2	3	4	5
6	7	8	9	10	11	12
13	14	15	16	17	18	19
20	21	22	23	24	25	26
27	28	29	30	1	2	3
4	5	6	7	8	9	10

# Preparing for the Big Move (out of your apartment)



## **Sending things home**

Japan post office (cheapest)  
Kuroneko

**01**



**04**



**02**



**05**



**03**

# Sending Things Home: Japan Post



Countries: America/Australia/Europe

	International parcel/posting (こくさいこづつみ)		
	Airmail (こうくびん)	Economy Air (SAL)	Surface mail (ふなびん)
	3 - 6 days	6-13 days	1-3 months
0.5kg - 1.0kg	2500 3350	2700	1800
1.5kg - 2.0kg	4200 5050	3850	2350
2.5kg - 3.0kg	5900 6750	5000	2900
3.5kg - 4.0kg	7600 8450	6150	3450
4.5kg - 5.0kg	9300 10150	7300	4000
5.5kg - 6.0kg	10900 11650	8350	4550
6.5kg - 7.0kg	12400 13150	9400	5100
7.5kg - 8.0kg	13900 14650	10450	5650
8.5kg - 9.0kg	15400 16150	11500	6200
9.5kg - 10.0kg	16900 17650	12550	6750

# Sending Things Home: Kuroneko (International TA-Q-BIN)



- **Delivers in 6-10 days**
- **Size L+W+H = \_\_\_\_cm**
- **Cannot send electronics or food.**
- **Disclaimer:**  
International TA-Q-BIN cannot be used to send personal belongings overseas for studying abroad, overseas transfers and trips. If you send your belongings overseas by TA-Q-BIN, they are not exempt from taxes. Additional tariffs may occur depending on its contents.

Main Service Regions	Australia, New Zealand, United States, Canada, Mexico, India, etc.	Britain, France, Germany, Netherlands, Belgium, Switzerland, Austria, Italy, Spain, Turkey, etc.
Document Pack	1,200 JPY	1,500 JPY
Size 60	2,750 JPY	3,200 JPY
Size 80	4,650 JPY	5,350 JPY
Size 100	8,850 JPY	10,150 JPY
Size 120	15,050 JPY	16,450 JPY
Size 140	20,550 JPY	23,950 JPY
Size 160	26,050 JPY	30,450 JPY



# Preparing for the Big Move (out of your apartment)



## **Sending things home**

- > Japan post office (cheapest)  
Kuroneko

**01**



## **AJET Yard Sale**

- > Sell your furniture/belongings

**04**



## **Forward your mail**

- > to a friends address in Japan

**02**



## **Clean your apartment**

- > Fix any interior damage

**05**



## **Moving out notification**

- > Do this at your municipal city office  
Tenshutsu-todoke 転出届け

**03**

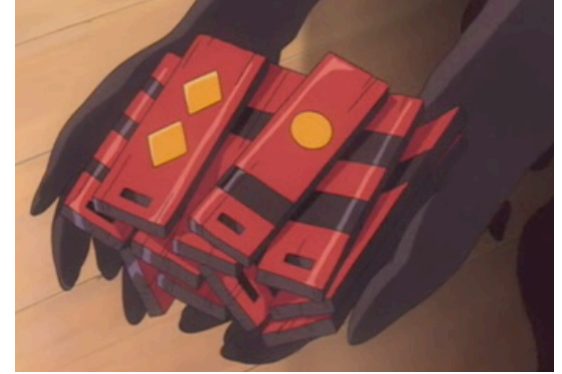


# Preparing for the Big Move (finances)



# Residency Tax

## How to pay your residency tax!



- ☐ Tokubetsu Chousou – deducted from employees monthly remuneration. *(ask your CO if they have set this up for you)*
- ☐ Futsu Chousou – paid individually in 1 lump sum to cover 1 fiscal year. *(Bill will be mailed to you in June.)*

1<sup>st</sup> and 2<sup>nd</sup> year American JETs are exempt from paying this.

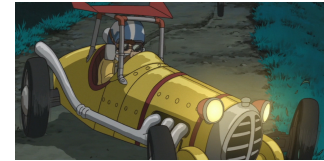


# Cancellation Fees

## AU, DOCOMO, SOFTBANK

Cancelling your  
internet contract  
may cost ¥10,000–  
¥20,000.

## CAR INSURANCE



Cancelling your phone  
contract may cost  
¥10,000–¥30,000.

1-2 hours to cancel  
service.

## INTERNET SERVICE PROVDER

# Return Airfare



Buy airfare home  
(approx. ¥70,000–¥130,000)



MARCH

APRIL

MAY

JUNE

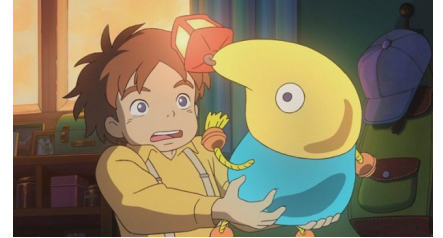
JULY

¥

Receive reimbursement

# Return Airfare

The BOE will not be responsible for your airfare payment if...



## Reason 1

You break contract before your term of appointment finishes.

## Reason 2

You enter into a new contract for a subsequent term of appointment with your CO or enter into a contract with a third party in Japan within one month of completing your term of appointment.

## Reason 3

Your departure date from Japan is more than 30 days after the end term of your appointment.

# Return Airfare (restrictions)

01

Destination must be to the same airport you departed from at the time of entering Japan.

02

Your BOE or CO will ask you to purchase the most logical route and means of travel.

03

Domestic travel to the airport in Tokyo will be covered by the BOE.

04

Make sure your departure date is *before* the expiration of your VISA.





# Preparing for the Big Move (VISA)

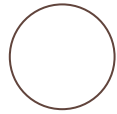
**Who needs to apply for the “Temporary visitor VISA”?**

3<sup>rd</sup> or 4<sup>th</sup> year JETs whose VISA expires the day their contract ends or before they want to leave Japan.

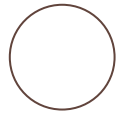
JETs who want to stay in Japan 30-90 days after the end of their contract.

JETs who will be job hunting after the end of their contract.

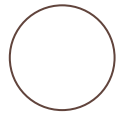
# VISA: Immigration Offices



**Application fee:**  
¥4,000 (revenue stamps)



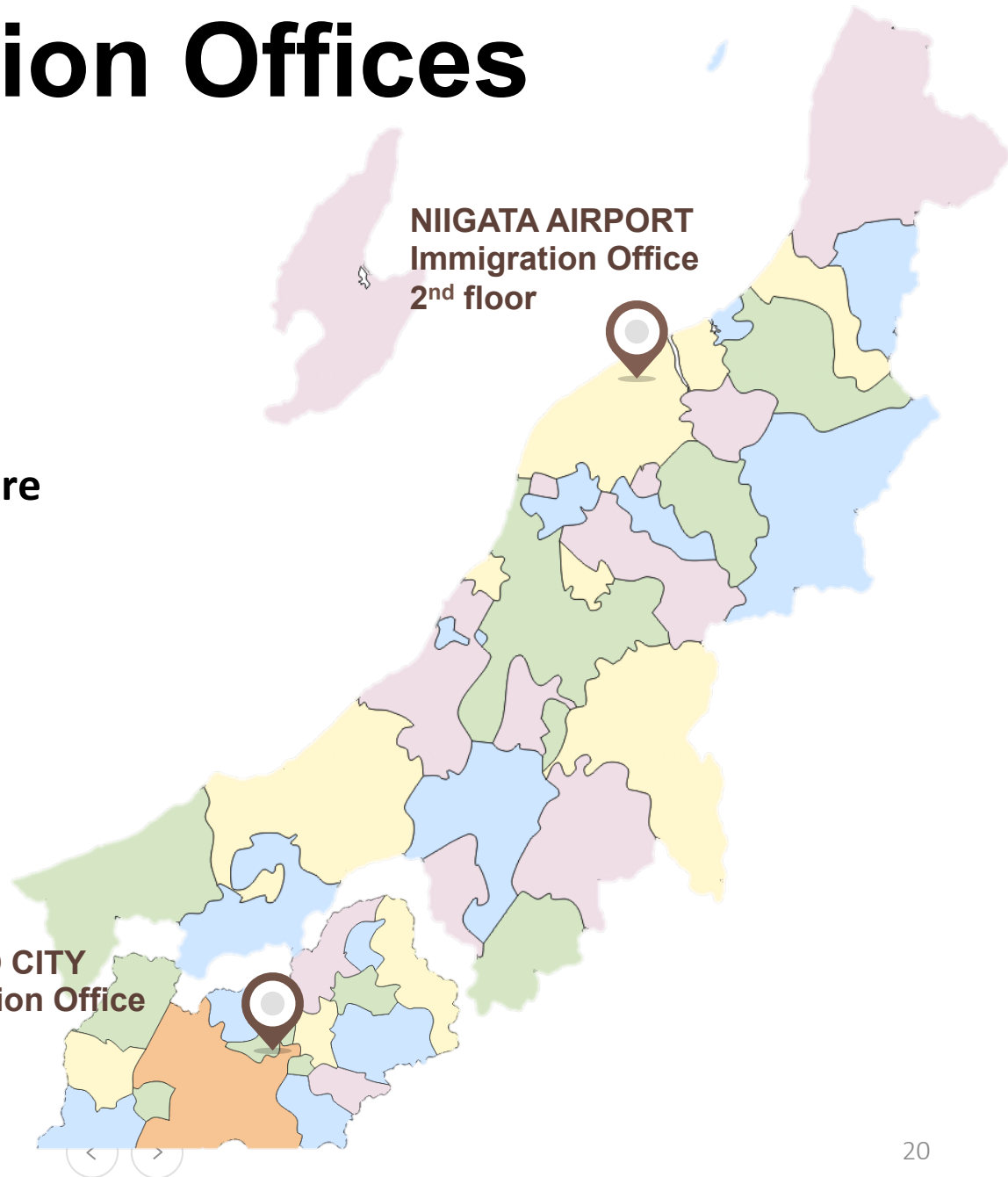
**Apply at least 5 weeks before  
VISA expires.**



**Immigration office hours:**  
Weekdays  
9:00-12:00  
13:00-16:00

**NAGANO CITY  
Immigration Office**  
3<sup>rd</sup> floor

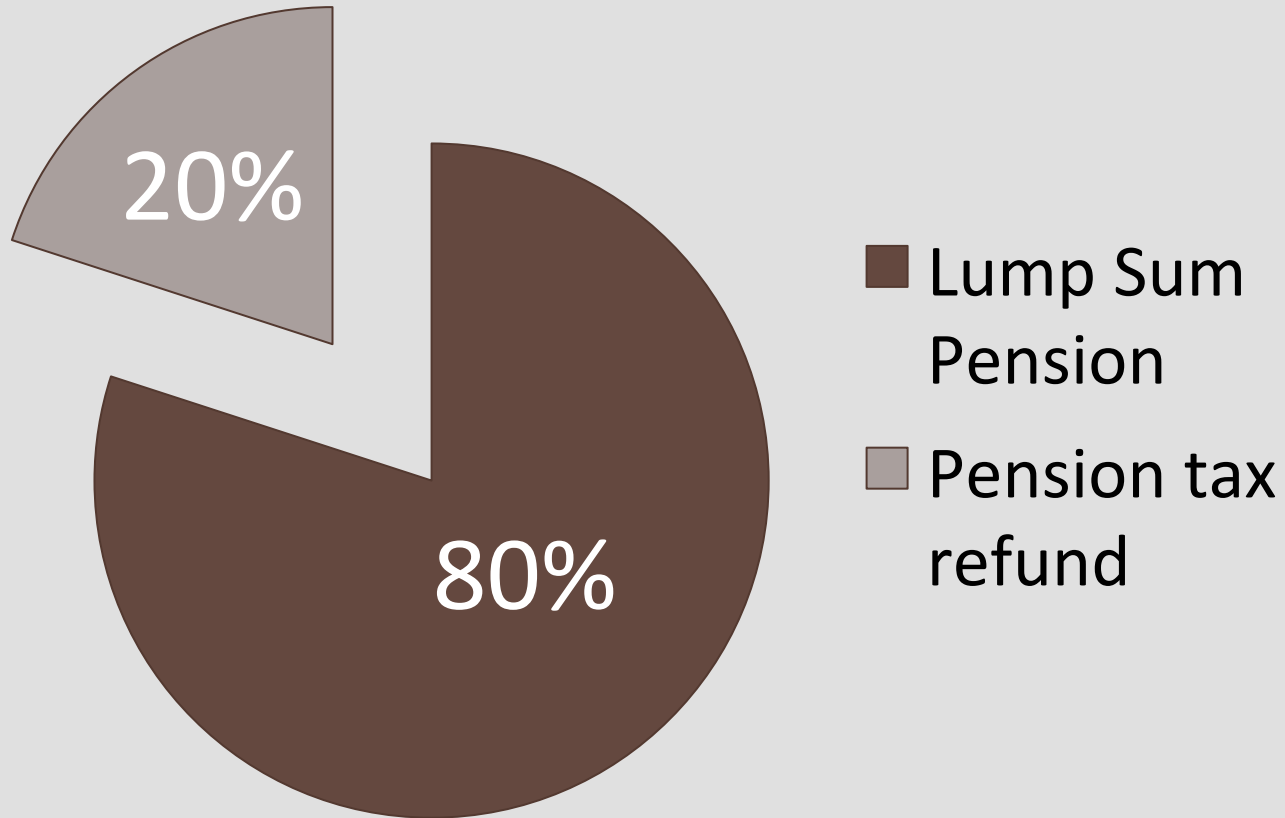
**NIIGATA AIRPORT  
Immigration Office**  
2<sup>nd</sup> floor



# Lump Sum Pension and Pension Tax Refund



# Lump Sum Pension and Pension Tax Refund



## Lump Sum Pension

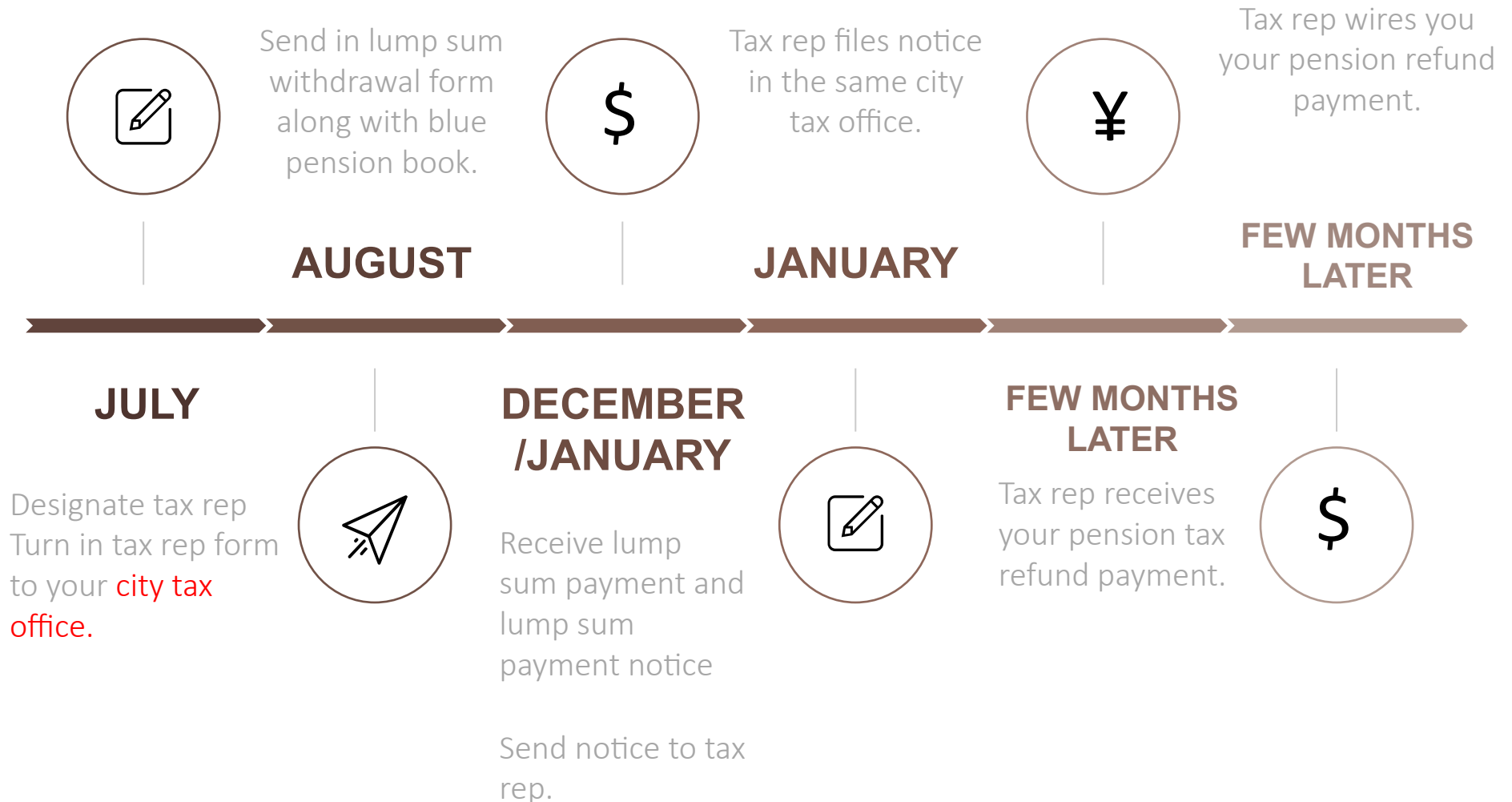
Received 2-4 months after applying.

## Pension Tax Refund

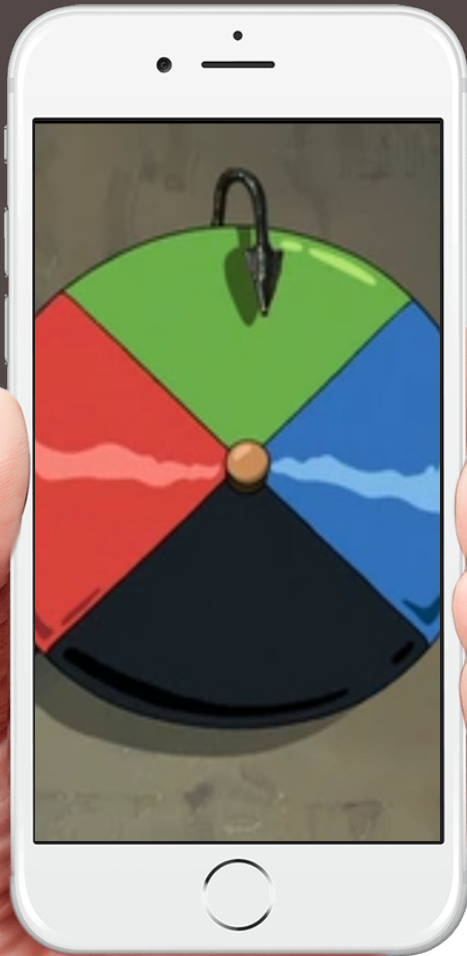
Received by tax rep after 3-4 months from filing in city tax office.

Lump sum pension application must be claimed within 2 years of leaving Japan.

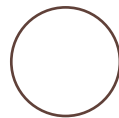
# Lump Sum Pension Timeline



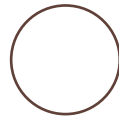
# Contacting Your Successor



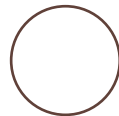
Reminder: Please contact them only after your CO has sent them their official letter of appointment.



**Create Successor's Guide**

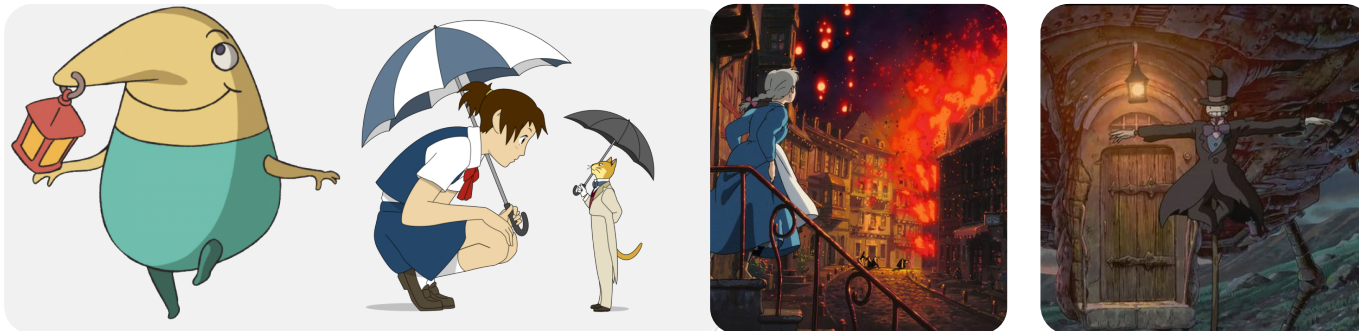
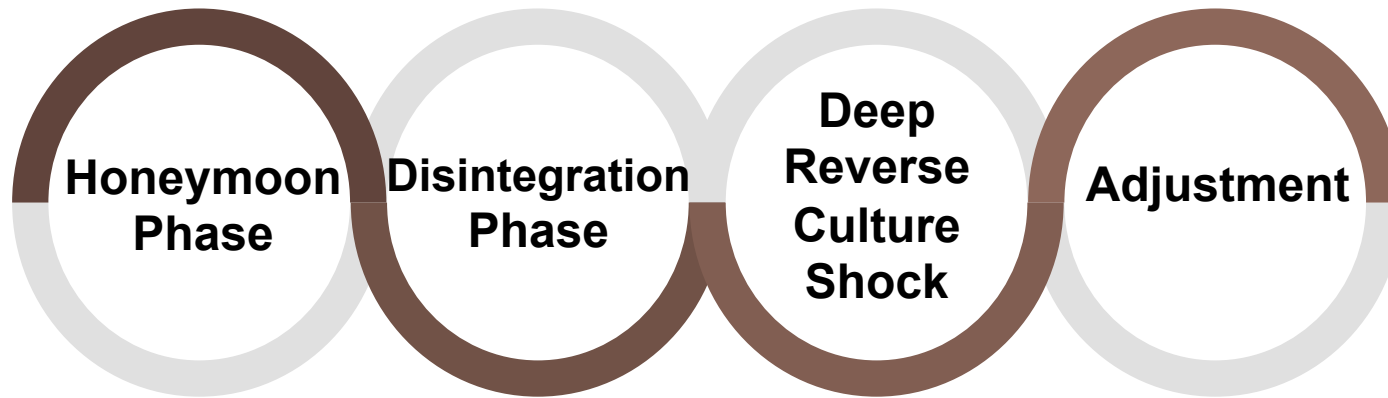


**Clean your desk(s) and home**



**Please don't sell them JUNK!!!**

# Reverse Culture Shock





**BEST**

# **THANK YOU QUESTIONS?**

---

**ALT PA  
JANICE LAUREANO**

**CIR PA  
BRANDON HOWARD**

